



CENTRAL SEWERSHED PACKAGE 8 – OPEN CUT PROJECT

Solicitation Number: CO-00378

Job No.: 19-4538

ADDENDUM 1

November 4, 2020

To Bidder of Record:

This addendum, applicable to work referenced above, is an amendment to the bid proposal, plans and specifications and as such will be a part of and included in the Contract Documents. Acknowledge receipt of this addendum by entering the Addendum number and issue date on the space provided in submitted copies of the bid proposal.

RESPONSES TO QUESTIONS

- 1. Question:** Due to the many different locations and the delays associated with By-passing set ups, traffic plans and waiting on Proctors for Density Testing, will SAWS increase the number of days to 330?

Response: No, the number of days will remain 270.

- 2. Question:** Will the bid items for Concrete Curb, Sidewalk & Driveways be paid when applicable for the sewer service crossing?

Response: Concrete Curb and Sidewalk are incidental to 854 – Sanitary Sewer Laterals. Refer to section 854.6 – PAYMENT for incidentals to 854 – Sanitary Sewer Laterals. Bid item 103.3 – Remove Concrete Sidewalks & Driveways (COSA) and 503.1 – Concrete Driveways (COSA) will be added to Project Location 11 and 13.

- 3. Question:** Is this package being bid incorporating the new SAWS specifications?

Response: No, the 2017 SAWS specifications will be used for this project. Refer to CHANGES TO THE SPECIFICICATIONS, Item 1 below. To access the 2017 SAWS specifications that will be used on this project, please go to the SAWS website shown below.

(https://apps.saws.org/business_center/specs/constspecs/)

- 4. Question:** What is the anticipated award date? What is the anticipated Notice to Proceed date?

Response: It is anticipated that the SAWS Board of Trustees will consider the award of contract for this project at their regularly scheduled meeting on December 8, 2020. If a contract is awarded, notice to proceed (NTP) would follow the execution of the contract and conducting a preconstruction meeting with the successful Contractor. SAWS may issue the NTP later, but Bidders can anticipate an NTP up to 30 days after the project is awarded.

CHANGES TO THE SPECIFICATIONS

- 1. Remove and Replace Table of Contents.** Updated technical specifications to the 2017 SAWS Specifications.

2. **Remove and Replace Bid Sheets.** Updated quantities for the addition of bid items required to perform the relay of new sewer service crossings. Replace Bid Sheet (BP-1 to BP-3) in its entirety with the version attached to this Addendum. Bidders shall use this revised version if submitting a bid for this project. Failure to use this version may result in the bid being rejected.

CHANGES TO THE PLANS

PLAN SHEETS. Updated quantities on all the following plan sheets:

1. **Remove and Replace - SHEET 2 – INDEX AND QUANTITIES**
 - a. Updated Quantities Table
2. **Remove and Replace - SHEET 29 – PROJECT LOCATION 10**
 - a. Updated Quantity for Bid Item 103.1 – Remove Concrete Curb (COSA)
 - b. Updated Quantity for Bid Item 500.1 – Concrete Curb (COSA)
3. **Remove and Replace - SHEET 33 – PROJECT LOCATION 11**
 - a. Added Bid Item 103.3 – Remove Concrete Sidewalk and Driveway (COSA)
 - b. Added Bid Item 503.1 – Concrete Driveways (COSA)
4. **Remove and Replace - SHEET 39 – PROJECT LOCATION 13**
 - a. Added Bid Item 103.3 – Remove Concrete Sidewalk and Driveway (COSA)
 - b. Added Bid Item 503.1 – Concrete Driveways (COSA)

CLARIFICATIONS

1. The estimated cost for this project was changed to \$2,143,121.70 which is now reflected on SAWS website at the following link:
https://apps.saws.org/business_center/ContractSol/Drill.cfm?id=3897&View=Yes

END OF ADDENDUM

This Addendum, including these two (2) pages, is ten (10) pages with attachments in its entirety. Attachments:

Table of Contents
Bid Sheet BP-1 to BP-3
Plan Sheets (4 total)



Marcos Díaz, PE
Halff Associates, Inc.

Contract Documents Table of Contents

<u>BIDDING AND CONTRACT REQUIREMENTS</u>	<u>PAGE</u>
Invitation to Bidders (<i>Rev. 11.28.2018</i>).....	IV-1
Electronic Bid Opening Instructions.....	EBOI-1
Instructions to Bidders (<i>Rev. 06.20</i>).....	IB-1
Workers' Compensation Insurance Coverage Requirements (<i>Rev. 9.08.2015</i>).....	WC-1
Contractor's Bid Packet Checklist (<i>Rev. 12.19</i>).....	BC
Bid Proposal.....	BP-1
Proposal Certification (<i>Rev. 4.14.2017</i>).....	PC-1
Good Faith Effort Plan (<i>Rev. 5.18.2017</i>)	GFEP-1
Conflict of Interest (<i>Rev. 11.30.2015</i>).....	Form CIQ
Wage Decisions	WR-1
General Conditions of the Contract (<i>Rev. 6.15</i>).....	GC-1
Contract Agreement (<i>Rev.02.14.19</i>)	CA-1
Performance and Payment Bond (<i>Rev. 10.18.2018</i>)	PB-1
Contractor Suspension Policy (<i>Rev. 3.14</i>).....	SP-1
Contractor Security Procedures (<i>Rev. 3.4.20</i>).....	SP-10
Request for Taxpayer Identification Number and Certification Form (<i>Rev. 10.18</i>).....	W-9
Instructions for Completing the ACORD Certificate of Liability Insurance (<i>Rev. 12.19</i>).....	ICS
Supplemental Conditions (<i>Rev. 09.27.19</i>)	SS-1
Special Conditions.	SC-1

(Separate Documents)

Technical Specifications

2017 SAWS SPECIFICATIONS FOR WATER AND SANITARY SEWER CONSTRUCTION

Note that the referenced specifications 100 through 1109 below are not printed in Section 1 but are available on-line at https://apps.saws.org/business_center/specs/constspecs/

ITEM NO.	DESCRIPTION
100	MOBILIZATION
101	PREPARATION OF RIGHT-OF-WAY
550	TRENCH EXCAVATION PROTECTION
804*	EXCAVATION, TRENCHING AND BACKFILL
824	SERVICE SUPPLY LINES
848	SANITARY SEWER
849	SANITARY SEWER ACCEPTANCE TESTING
850	SANITARY SEWER STRUCTURES

BID PROPOSAL

PROPOSAL OF _____, a corporation
a partnership consisting of _____
an individual doing business as _____

THE SAN ANTONIO WATER SYSTEM:

Pursuant to Instructions and Invitation to Bidders, the undersigned proposes to furnish all labor and materials as specified and perform the work required for the project as specified, in accordance with the Plans and Specifications for the following prices in the bid proposal to wit:

PLEASE SEE ATTACHED LIST OF BID ITEMS.

BIDDER'S SIGNATURE & TITLE

FIRM'S NAME (TYPE OR PRINT)

FIRM'S ADDRESS

FIRM'S PHONE NO. /FAX NO.

FIRM'S EMAIL ADDRESS

The Contractor herein acknowledges receipt of the following:
Addendum Nos. _____

OWNER RESERVES THE RIGHT TO ACCEPT THE OVERALL MOST RESPONSIBLE BID.

The bidder offers to construct the Project in accordance with the Contract Documents for the contract price, and to complete the Project within **270** calendar days after the start date as set forth in the Authorization to Proceed. **The bidder understands and accepts the provisions of the contract Documents relating to liquidated damages of the project if not completed on time.**

Complete the additional requirements of the Bid Proposal which are included on the following pages.

Statement on President's Executive Orders

Has your firm previously performed work subject to the President's Executive Orders Numbers 11246 and 11375 or any preceding similar executive orders (Numbers 10925 and 11114)?

Yes No

CENTRAL SEWERSHED PACKAGE 8 - OPEN CUT
SAWS Job No. 19-4538
Solicitation No. CO-00378

Item No.	Spec No.	Bid Items Specification No. & Description	Unit	Qty.	Unit Price	Total Price
1	103.1	Remove Concrete Curb (COSA)	LF	5	\$	\$
2	103.3	Remove Concrete Sidewalk and Driveway (COSA)	SF	1771	\$	\$
3	203	Tack Coat (COSA)	GAL	174	\$	\$
4	205.2	Hot Mix Asphaltic Pavement - Type B (10" Compacted Depth) (COSA)	SY	1640	\$	\$
5	205.4	Hot Mix Asphaltic Pavement - Type D (2" Compacted Depth) (COSA)	SY	1763	\$	\$
6	208	Salvaging, Hauling & Stockpiling Reclaimable Asphaltic Pavement (COSA)	SY	1701	\$	\$
7	413.2	Flowable Fill (High Strength) (COSA)	CY	24	\$	\$
8	500.1	Concrete Curb (COSA)	LF	5	\$	\$
9	502.1	Concrete Sidewalks (COSA)	SY	3	\$	\$
10	503.1	Concrete Driveway (COSA)	SY	207	\$	\$
11	507.2	Chain Link Wire Fence (6' High) (COSA)	LF	50	\$	\$
12	507	Wood Fence (COSA)	LF	60	\$	\$
13	515.1	Top Soil (COSA)	CY	6	\$	\$
14	516.1	Bermuda Sodding (COSA)	CY	483	\$	\$
15	530.1	Barricades, Signs & Traffic Handling (Project Location 4) (COSA)	LS	1	\$	\$
16	530.1	Barricades, Signs & Traffic Handling (Project Location 5) (COSA)	LS	1	\$	\$
17	530.1	Barricades, Signs & Traffic Handling (Project Location 8) (COSA)	LS	1	\$	\$
18	530.1	Barricades, Signs & Traffic Handling (Project Location 9) (COSA)	LS	1	\$	\$
19	530.1	Barricades, Signs & Traffic Handling (Project Location 10) (COSA)	LS	1	\$	\$
20	530.1	Barricades, Signs & Traffic Handling (Project Location 11) (COSA)	LS	1	\$	\$
21	530.1	Barricades, Signs & Traffic Handling (Project Location 12) (COSA)	LS	1	\$	\$
22	530.1	Barricades, Signs & Traffic Handling (Project Location 13) (COSA)	LS	1	\$	\$
23	530.1	Barricades, Signs & Traffic Handling (Project Location 14) (COSA)	LS	1	\$	\$
24	530.1	Barricades, Signs & Traffic Handling (Project Location 15) (COSA)	LS	1	\$	\$
25	530.1	Barricades, Signs & Traffic Handling (Project Location 16) (COSA)	LS	1	\$	\$
26	530.1	Barricades, Signs & Traffic Handling (Project Location 17) (COSA)	LS	1	\$	\$
27	530.1	Barricades, Signs & Traffic Handling (Project Location 18) (COSA)	LS	1	\$	\$
28	531.1	Barricades, Signs & Traffic Handling (Project Location 20) (COSA)	LS	1	\$	\$
29	530.1	Barricades, Signs & Traffic Handling (Project Location 23) (COSA)	LS	1	\$	\$
30	550	Trench Excavation Safety Protection	LF	3454	\$	\$
31	848	8" PVC Gravity Sanitary Sewer Pipe (SDR-26-3034, 115 psi)	LF	2605	\$	\$
32	848	10" PVC Gravity Sanitary Sewer Pipe (SDR-26-3034, 115 psi)	LF	372	\$	\$
33	848	12" PVC Gravity Sanitary Sewer Pipe (SDR-26-3034, 115 psi)	LF	297	\$	\$
34	851	Adjust Existing Manhole (New Water Tight Ring and Cover)	LF	30	\$	\$
35	852	Sanitary Sewer Manhole (Additional Vertical Foot)	VF	99	\$	\$
36	852	Sanitary Sewer Manhole (Standard 6 feet)	EA	9	\$	\$
37	854	Sanitary Sewer Laterals (SDR-26 ASTM 2241, 150 psi.)	LF	1454	\$	\$

CENTRAL SEWERSHED PACKAGE 8 - OPEN CUT
SAWS Job No. 19-4538
Solicitation No. CO-00378

Item No.	Spec No.	Bid Items Specification No. & Description	Unit	Qty.	Unit Price	Total Price
38	854	Two-way Sanitary Sewer Clean-out	EA	73	\$	\$
39	858	Concrete Encasement (Cradles, Saddles & Collars)	CY	46	\$	\$
40	862	Abandonment of SS Main (Pipe)	LF	425	\$	\$
41	862	Abandonment of SS Main (Manhole) (Complete in place)	EA	3	\$	\$
42	864-S2	Bypass Pumping (Large Diameter Sanitary Sewers) (Project Location 20-23)	LS	1	\$	\$
43	865	Bypass Pumping (Small Diameter SS) (Project Location 1)	LS	1	\$	\$
44	865	Bypass Pumping (Small Diameter SS) (Project Location 4)	LS	1	\$	\$
45	865	Bypass Pumping (Small Diameter SS) (Project Location 8)	LS	1	\$	\$
46	865	Bypass Pumping (Small Diameter SS) (Project Location 9)	LS	1	\$	\$
47	865	Bypass Pumping (Small Diameter SS) (Project Location 10)	LS	1	\$	\$
48	865	Bypass Pumping (Small Diameter SS) (Project Location 11)	LS	1	\$	\$
49	865	Bypass Pumping (Small Diameter SS) (Project Location 12)	LS	1	\$	\$
50	865	Bypass Pumping (Small Diameter SS) (Project Location 13)	LS	1	\$	\$
51	865	Bypass Pumping (Small Diameter SS) (Project Location 16)	LS	1	\$	\$
52	865	Bypass Pumping (Small Diameter SS) (Project Location 17)	LS	1	\$	\$
53	865	Bypass Pumping (Small Diameter SS) (Project Location 18)	LS	1	\$	\$
54	865	Bypass Pumping (Small Diameter SS) (Project Location 22 & 23)	LS	1	\$	\$
55	866	Sewer Main Pre-Televising Inspection (8" Through 15" Diameter)	LF	5288	\$	\$
56	866	Sewer Main Post-Televising Inspection (8" Through 15" Diameter)	LF	3264	\$	\$
57	900	8" Pipe Bursting (All Depths)	LF	2014	\$	\$
58	910	Manhole Rehabilitation	VF	229	\$	\$
59	1103	Point Repairs for 8" Diameter (0'-10' Depth) Including up to 20 LF of Piping	EA	9	\$	\$
60	1109	Service Reconnection, all depths (w open cut)	EA	54	\$	\$
SUBTOTAL (ITEMS 1-60)					\$	\$

61	100	Mobilization (Max 10% of Line Items 1-60)	LS	1	\$	\$
62	101	Preparing Right-Of-Way (Max 5% of Line Items 1-60)	LS	1	\$	\$

Mobilization and Prep of ROW shall be limited to the maximum percentage shown. If percentage exceeds the allowable maximum stated for mobilization and or preparation of ROW, SAWS reserves the right to cap the amount at the percentages shown and adjust the extensions of the bid items accordingly.

TOTAL BID PRICE					\$	
(TO INCLUDE LINE ITEMS 1-60 AND 61-62)					\$	

SHEET INDEX		
1		COVER
2		SHEET INDEX AND SUMMARY OF QUANTITIES
3		SAWS GENERAL NOTES
4		COSA GENERAL NOTES
5		PROJECT LAYOUT 1
6		PROJECT LAYOUT 2
7		PROJECT LAYOUT 3
8		PROJECT LAYOUT 4
9		PROJECT LAYOUT 5
10		PROJECT LAYOUT 6
11		PROJECT LAYOUT 7
12		PROJECT LAYOUT 8
13	COMPKEY: 979132	OPENCUT - PROJECT LOCATION 1
14		BYPASS PLAN - PROJECT LOCATION 1
15	COMPKEY: 1065612	OPENCUT-PROJECT LOCATION 2
16	COMPKEY: 973153	OPENCUT-PROJECT LOCATION 4
17		BYPASS-PROJECT LOCATION 4
18		TCP-PROJECT LOCATION 4
19	COMPKEY: 1026784	OPENCUT-PROJECT LOCATION 5
20		TCP-PROJECT LOCATION 5
21	COMPKEY: 963597	OPENCUT-PROJECT LOCATION 6 (SHEET 1 OF 3)
22	COMPKEY: 3255650	OPENCUT-PROJECT LOCATION 7 & 8 (SHEET 2 OF 3)
23	COMPKEY: 2389338	OPENCUT-PROJECT LOCATION 8 (SHEET 3 OF 3)
24		BYPASS-PROJECT LOCATION 6, 7, & 8
25		TCP-PROJECT LOCATION 6, 7, & 8
26	COMPKEY: 973146	OPENCUT-PROJECT LOCATION 9
27		BYPASS-PROJECT LOCATION 9
28		TCP-PROJECT LOCATION 9
29	COMPKEY: 977763	OPENCUT-PROJECT LOCATION 10
30		BYPASS-PROJECT LOCATION 10
31		TCP-PROJECT LOCATION 10 (SHEET 1 OF 2)
32		TCP-PROJECT LOCATION 10 (SHEET 2 OF 2)
33	COMPKEY: 2398165	OPENCUT-PROJECT LOCATION 11
34		BYPASS-PROJECT LOCATION 11
35		TCP-PROJECT LOCATION 11
36	COMPKEY: 978911	OPENCUT-PROJECT LOCATION 12
37		BYPASS-PROJECT LOCATION 12
38		TCP-PROJECT LOCATION 12
39	COMPKEY: 990990	OPENCUT-PROJECT LOCATION 13
40		BYPASS PLAN-PROJECT LOCATION 13
41		TCP-PROJECT LOCATION 13
42	COMPKEY: 991909	OPENCUT-PROJECT LOCATION 14
43		TCP-PROJECT LOCATION 14
44	COMPKEY: 992350	OPENCUT-PROJECT LOCATION 15
45		TCP-PROJECT LOCATION 15
46	COMPKEY: 975923	OPENCUT-PROJECT LOCATION 16
47		BYPASS-PROJECT LOCATION 16
48		TCP-PROJECT LOCATION 16
49	COMPKEY: 976165	OPENCUT-PROJECT LOCATION 17
50		BYPASS-PROJECT LOCATION 17
51		TCP-PROJECT LOCATION 17
52	COMPKEY: 978518	OPENCUT-PROJECT LOCATION 18
53		BYPASS-PROJECT LOCATION 18
54		TCP-PROJECT LOCATION 18
55	COMPKEY: 998086	OPENCUT-PROJECT LOCATION 20
56	COMPKEY: 990742	OPENCUT-PROJECT LOCATION 21
57	COMPKEY: 989680	OPENCUT-PROJECT LOCATION 22 (SHEET 1 OF 2)
58	COMPKEY: 990940	OPENCUT-PROJECT LOCATION 23 (SHEET 2 OF 2)
59		BYPASS-PROJECT LOCATION 20-23
60		TCP-PROJECT LOCATION 23
61		MISCELLANEOUS DETAILS
62		TREE PROTECTION DETAILS
63		BC(1)-14 (1 OF 12)
64		BC(2)-14 (2 OF 12)
65		BC(3)-14 (3 OF 12)
66		BC(4)-14 (4 OF 12)
67		BC(5)-14 (5 OF 12)
68		BC(6)-14 (6 OF 12)
69		BC(7)-14 (7 OF 12)
70		BC(8)-14 (8 OF 12)
71		BC(9)-14 (9 OF 12)
72		BC(10)-14 (10 OF 12)
73		BC(11)-14 (11 OF 12)
74		BC(12)-14 (12 OF 12)
75		COSA DRIVEWAY STANDARDS

* PROJECT LOCATION 3 AND 19 ARE NOT INCLUDED IN THIS PACKAGE

ABBREVIATIONS			
APPROX	APPROXIMATELY	PVC	POLYVINYL CHLORIDE
CIPP	CURED IN PLACE PIPE	RCP	REINFORCED CONCRETE PIPE
CP	CONCRETE PIPE	ROW	RIGHT-OF-WAY
EL	ELEVATION	SS	SANITARY SEWER
EXIST	EXISTING	STA	STATION
FL	FLOW LINE	TR	TOP OF RIM
FT	FEET	TYP	TYPICAL
LF	LINEAR FEET	UGE	UNDERGROUND ELECTRIC
LP	LIGHT POLE	VCP	VITRIFIED CLAY PIPE
MH	MANHOLE	VF	VERTICAL FEET
OHE	OVERHEAD ELECTRIC	WL	WATERLINE
PP	POWER POLE		

ESTIMATED QUANTITIES			
ITEM NO.	DESCRIPTION	UNIT	QTY
103.1	Remove Concrete Curb (COSA)	LF	5
103.3	Remove Concrete Sidewalk and Driveway (COSA)	SF	1771
203	Tack Coat (COSA)	GAL	174
205.2	Hot Mix Asphaltic Pavement - Type B (10" Compacted Depth) (COSA)	SY	1640
205.4	Hot Mix Asphaltic Pavement - Type D (2" Compacted Depth) (COSA)	SY	1763
208	Salvaging, Hauling & Stockpiling Reclaimable Asphaltic Pavement (COSA)	SY	1701
413.2	Flowable Fill (High Strength) (COSA)	CY	24
500.1	Concrete Curb (COSA)	LF	5
502.1	Concrete Sidewalks (COSA)	SY	3
503.1	Concrete Driveway (COSA)	SY	207
507.2	Chain Link Wire Fence (6' High) (COSA)	LF	50
507	Wood Fence (COSA)	LF	60
515.1	Top Soil (COSA)	CY	6
516.1	Bermuda Sodding (COSA)	CY	483
530.1	Barricades, Signs & Traffic Handling (Project Location 4) (COSA)	LS	1
530.1	Barricades, Signs & Traffic Handling (Project Location 5) (COSA)	LS	1
530.1	Barricades, Signs & Traffic Handling (Project Location 8) (COSA)	LS	1
530.1	Barricades, Signs & Traffic Handling (Project Location 9) (COSA)	LS	1
530.1	Barricades, Signs & Traffic Handling (Project Location 10) (COSA)	LS	1
530.1	Barricades, Signs & Traffic Handling (Project Location 11) (COSA)	LS	1
530.1	Barricades, Signs & Traffic Handling (Project Location 12) (COSA)	LS	1
530.1	Barricades, Signs & Traffic Handling (Project Location 13) (COSA)	LS	1
530.1	Barricades, Signs & Traffic Handling (Project Location 14) (COSA)	LS	1
530.1	Barricades, Signs & Traffic Handling (Project Location 15) (COSA)	LS	1
530.1	Barricades, Signs & Traffic Handling (Project Location 16) (COSA)	LS	1
530.1	Barricades, Signs & Traffic Handling (Project Location 17) (COSA)	LS	1
530.1	Barricades, Signs & Traffic Handling (Project Location 18) (COSA)	LS	1
531.1	Barricades, Signs & Traffic Handling (Project Location 20) (COSA)	LS	1
530.1	Barricades, Signs & Traffic Handling (Project Location 23) (COSA)	LS	1
550	Trench Excavation Safety Protection	LF	3454
848	8" PVC Gravity Sanitary Sewer Pipe (SDR-26-3034, 115 psi)	LF	2605
848	10" PVC Gravity Sanitary Sewer Pipe (SDR-26-3034, 115 psi)	LF	372
848	12" PVC Gravity Sanitary Sewer Pipe (SDR-26-3034, 115 psi)	LF	297
851	Adjust Existing Manhole (New Water Tight Ring and Cover)	EA	30
852	Sanitary Sewer Manhole (Additional Vertical Foot)	VF	99
852	Sanitary Sewer Manhole (Standard 6 feet)	EA	9
854	Sanitary Sewer Laterals (SDR-26 ASTM 2241, 150 psi.)	LF	1454
854	Two-way Sanitary Sewer Clean-out	EA	73
858	Concrete Encasement (Cradles, Saddles & Collars)	CY	46
862	Abandonment of SS Main (Pipe)	LF	425
862	Abandonment of SS Main (Manhole) (Complete in place)	EA	3
864-S2	Bypass Pumping (Large Diameter Sanitary Sewers) (Project Location 20-23)	LS	1
865	Bypass Pumping (Small Diameter SS) (Project Location 1)	LS	1
865	Bypass Pumping (Small Diameter SS) (Project Location 4)	LS	1
865	Bypass Pumping (Small Diameter SS) (Project Location 8)	LS	1
865	Bypass Pumping (Small Diameter SS) (Project Location 9)	LS	1
865	Bypass Pumping (Small Diameter SS) (Project Location 10)	LS	1
865	Bypass Pumping (Small Diameter SS) (Project Location 11)	LS	1
865	Bypass Pumping (Small Diameter SS) (Project Location 12)	LS	1
865	Bypass Pumping (Small Diameter SS) (Project Location 13)	LS	1
865	Bypass Pumping (Small Diameter SS) (Project Location 16)	LS	1
865	Bypass Pumping (Small Diameter SS) (Project Location 17)	LS	1
865	Bypass Pumping (Small Diameter SS) (Project Location 18)	LS	1
865	Bypass Pumping (Small Diameter SS) (Project Location 22 & 23)	LS	1
866	Sewer Main Pre-Televising Inspection (8" Through 15" Diameter)	LF	5288
866	Sewer Main Post-Televising Inspection (8" Through 15" Diameter)	LF	3264
900	8" Pipe Bursting (All Depths)	LF	2014
910	Manhole Rehabilitation	VF	229
1103	Point Repairs for 8" Diameter (0'-10' Depth) Including up to 20 LF of Piping	EA	9
1109	Service Reconnection, all depths (w open cut)	EA	54
100	Mobilization (10%)	LS	1
101	Preparing Right-Of-Way (5%)	LS	1

△
△
△



THE SEAL APPEARING ON THIS DOCUMENT WAS AUTHORIZED BY MARCOS DIAZ, PE No. 107249, ON 11/04/2020. ALTERATION OF A SEALED DOCUMENT WITHOUT PROPER NOTIFICATION TO THE RESPONSIBLE ENGINEER IS AN OFFENSE UNDER THE TEXAS ENGINEERING PRACTICE ACT. THE RECORD COPY OF THE DRAWING IS ON FILE AT THE OFFICES OF HALFF ASSOCIATES, INC. 100 NE LOOP 410, SUITE 200, SAN ANTONIO, TEXAS 78216. TBPE FIRM REGISTRATION #312.



No.	Revision	Drawn	Approved	Date
1	UPDATED QUANTITIES	L.C.	M.D.	11/4/20

REVISIONS

CENTRAL SEWERSHED PACKAGE 8 - OPEN CUT

SHEET INDEX AND SUMMARY OF QUANTITIES

DEVELOPER: _____

CONT. _____ BUDGET PROJ. _____

SUBMITTED _____

APPROVED _____

MAP No. _____ SHEET 2

SECT. No. _____ OF 75

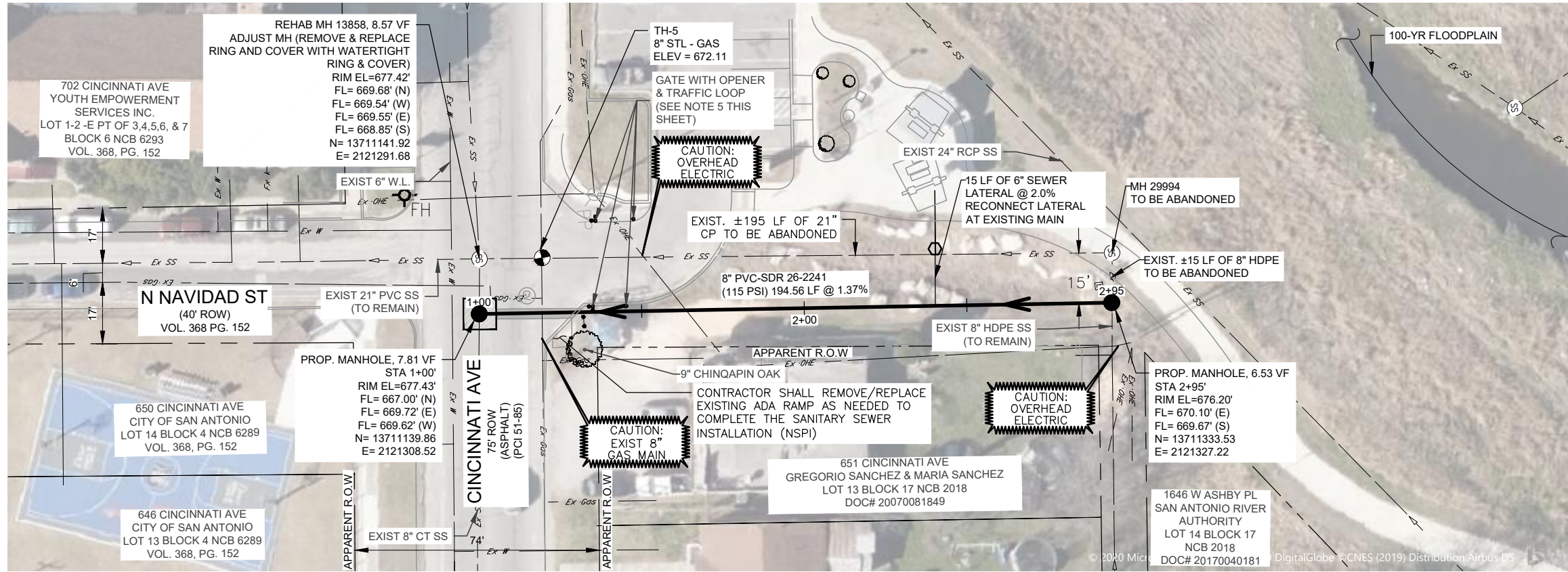
DR. _____ CK. _____ JOB No. 19-4538

- NOTES:
- PROPERTY LINES SHOWN ARE APPROXIMATE.
 - CONTRACTOR SHALL SAW-CUT ALL PAVEMENT TO BE REMOVED.
 - CALL THE TEXAS STATE WIDE ONE CALL LOCATOR NUMBER 1-800-344-8344, 48 HOURS BEFORE BEGINNING ANY EXCAVATION.

- LOCATIONS OF EXISTING UTILITIES SHOWN ARE APPROXIMATE AND BASED ON AVAILABLE DRAWINGS AND FIELD SURVEY. CONTRACTOR SHALL VERIFY LOCATION OF ALL EXISTING UTILITIES PRIOR TO CONSTRUCTION.
- THE CONTRACTOR SHALL BE RESPONSIBLE FOR MAINTAINING OPERATION OF ALL EXISTING UTILITIES AFFECTED BY PROPOSED CONSTRUCTION.

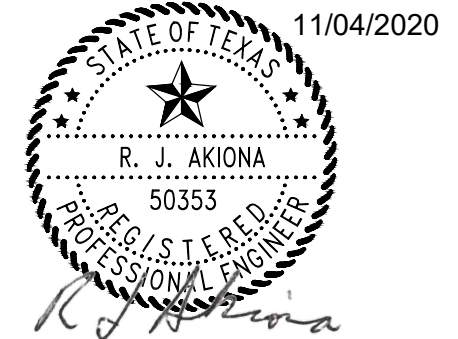
- POINT REPAIRS ARE FOR PARTIAL COLLAPSE, MISSING PIPE, AND/OR PROTRUDING SERVICE IN MAIN, UNLESS OTHERWISE NOTED.
- SMART MANHOLE COVERS: THE CONTRACTOR SHALL NOTIFY AMERICA ESPINOZA AT 210-233-2934 OR JOE MARTINEZ AT 210-233-2071 A MINIMUM OF 1 WEEK, NOT COUNTING WEEKENDS OR SAWS HOLIDAYS, BEFORE WORKING ON MANHOLE, IN ORDER TO HAVE SAWS REMOVE THE SMART COVER. ANY DAMAGE DONE TO SMART COVER WILL BE AT CONTRACTOR'S EXPENSE.

- CONTRACTOR TO COORDINATE WITH SCHOOLS AND TO SCHEDULE WORK EFFORTS AROUND SCHOOL'S PEAK HOURS.
- CONTRACTOR SHALL SUPPORT AND PROTECT ALL UTILITIES CROSSING AND/OR IN CLOSE PROXIMITY TO RECONSTRUCTION OF EXISTING SANITARY SEWER MAINS, LATERALS, AND MANHOLES. (NSPI)
- CONTRACTOR SHALL EXPOSE AND PROTECT ALL UTILITIES WITHIN THE SEWER CONSTRUCTION ENVELOPE.



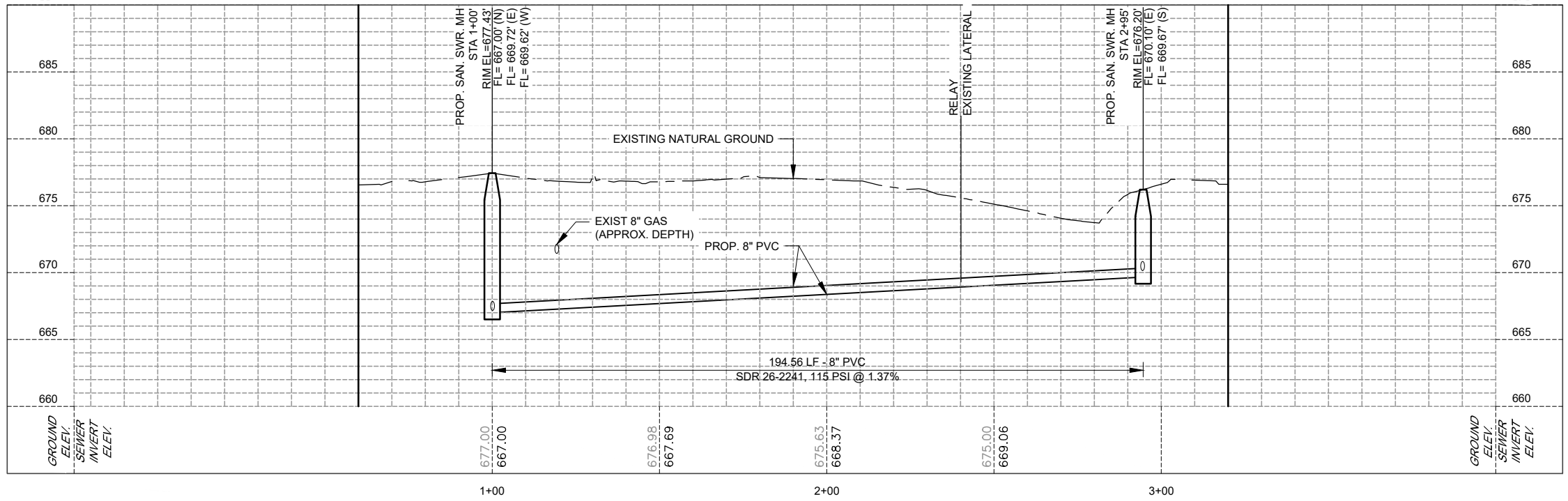
LEGEND

EXISTING NATURAL GAS LINE	— Ex Gas —
EXISTING OVERHEAD ELECTRIC	— Ex OHE —
EXISTING UNDERGROUND ELECTRIC	— Ex UGE —
EXISTING UNDERGROUND TELEPHONE	— Ex UGTel —
EXISTING WATER LINE	— Ex W —
EXISTING SANITARY SEWER LINE	— Ex SS —
EXISTING STORM SEWER LINE	— Ex SS —
EXISTING SANITARY SEWER MH	SS
EXISTING POWER POLE	PP
PROPOSED SANITARY SEWER MH	●
PROPOSED SANITARY SEWER LINE	—
PROPOSED SANITARY SEWER 2-WAY C/O	—
PROPOSED CONCRETE ENCASEMENT	▨
PROPOSED PAVEMENT REPAIR	▨
PROPOSED MILL & OVERLAY	▨



CONTRACTOR SHALL BE RESPONSIBLE FOR LOCATING ALL UTILITIES WHETHER PUBLIC OR PRIVATE, PRIOR TO CONSTRUCTION

ITEM NO.	DESCRIPTION	UNIT	QTY			
103	Remove Concrete Curb (COSA)	LF	5.00	848	8" PVC Gravity Sanitary Sewer Pipe (SDR-26-3034, 115 psi)	LF 195.00
203	Tack Coat (COSA)	GAL	0.80	851	Adjust Existing Manhole (New Water Tight Ring and Cover)	EA 1.00
205.2	Hot Mix Asphaltic Pavement - Type B (10" Compacted Depth) (COSA)	SY	8.30	852	Sanitary Sewer Manhole (Additional Vertical Foot)	VF 2.34
205.4	Hot Mix Asphaltic Pavement - Type D (2" Compacted Depth) (COSA)	SY	8.30	852	Sanitary Sewer Manhole (Standard 6 feet)	EA 2.00
208	Salvaging, Hauling & Stockpiling Reclaimable Asphaltic Pavement (COSA)	SY	8.30	854	Sanitary Sewer Laterals (SDR-26 ASTM 2241, 150 psi.)	LF 36.00
413.2	Flowable Fill (High Strength) (COSA)	CY	24.00	862	Two-way Sanitary Sewer Clean-out	EA 1.00
500.1	Concrete Curb (< 1,000 L.F.) (COSA Spec)	LF	5.00	862	Abandonment of SS Main (Pipe)	LF 210.00
515	Top Soil (COSA)	CY	6.00	864	Abandonment of SS Main (Manhole) (Complete in place)	EA 1.00
516	Bermuda Sodding (COSA)	CY	483.00	866	Bypass Pumping (Small Diameter SS) (Project Location 10)	LS 1.00
530.1	Barricades, Signs & Traffic Handling (Project Location 10) (COSA)	LS	1.00	866	Pre-Construction Sewer Main Televising Inspection	LF 195.00
550	Trench Excavation Safety Protection (COSA)	LF	195.00	910	Post-Construction Sewer Main Televising Inspection	LF 195.00
					Manhole Rehabilitation	VF 8.57



MENDEZ ENGINEERING
Registration # F-14070
12950 Country Parkway STE 120, San Antonio, Texas 78216
Office: 210-802-0808 www.MendezEngineering.com

HALFF
100 NE LOOP 410, SUITE 200
SAN ANTONIO, TEXAS 78216
TEL (210) 798-1895/BPE FIRM REGISTRATION #312

ADDENDUM No. 1	JJC	RA	11/04/20
Revision	Drawn	Approved	Date

REVISIONS

CENTRAL SEWERSHED
PACKAGE 8 - OPEN CUT
OPEN-CUT
PROJECT LOCATION 10
PLAN & PROFILE
COMPKEY: 977763

DEVELOPER: _____

CONT. _____ BUDGET PROJ. _____

SUBMITTED _____

APPROVED _____

MAP No. 152586 SHEET 29

SECT. No. _____ Of 75

DR. JJC CK. RA JOB No. 19-4538

S.A.W.S. DESIGN

4/6/2020 9:55:00 AM agelidm\MS G:\Projects\2019\1906-3 SAWS - SDC Pl. 8 - Halff\CVILC-13 Compkey\977763.dwg PNPSSHEET

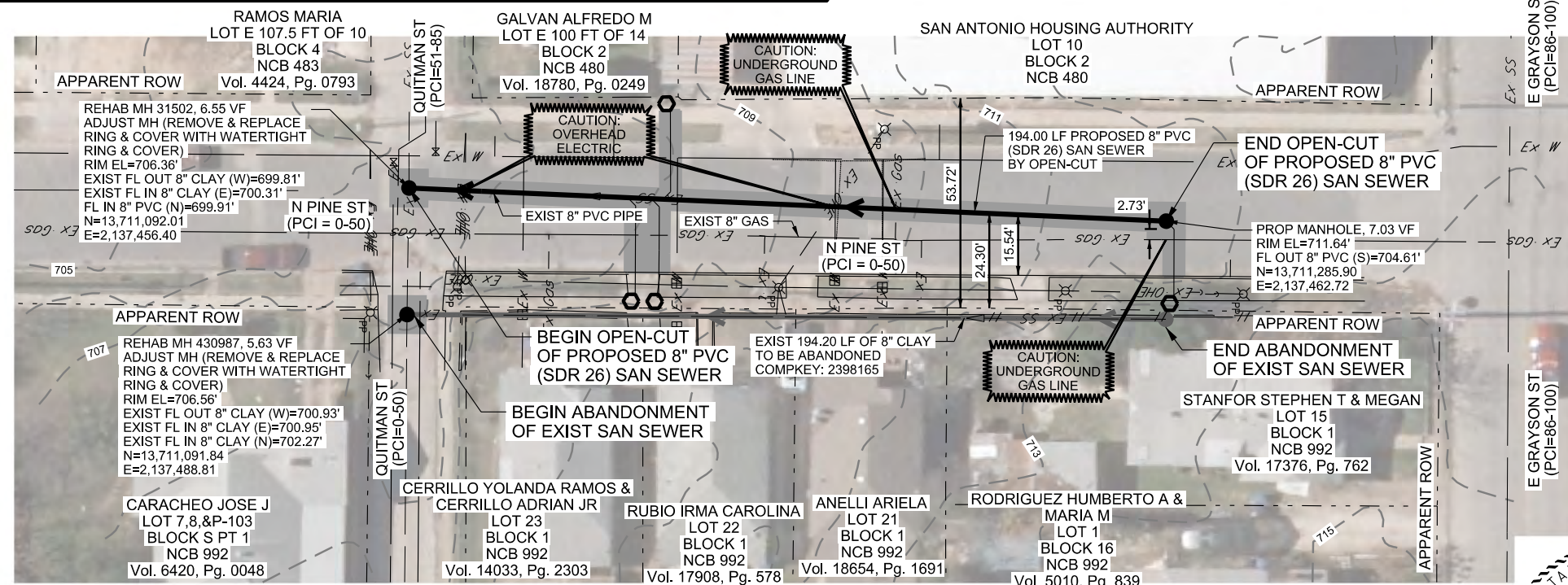
TRENCH SAFETY PROTECTION

CONTRACTOR AND/OR CONTRACTOR'S INDEPENDENTLY RETAINED EMPLOYEE OR STRUCTURAL DESIGN/GEOTECHNICAL/SAFETY/EQUIPMENT CONSULTANT, IF ANY, SHALL REVIEW THESE PLANS AND AVAILABLE GEOTECHNICAL INFORMATION AND ANTICIPATED INSTALLATION SITE(S) WITHIN THE PROJECT WORK AREA IN ORDER TO IMPLEMENT CONTRACTOR'S TRENCH EXCAVATION SAFETY PROTECTION SYSTEMS, PROGRAMS AND/OR PROCEDURES. THE CONTRACTOR'S IMPLEMENTATION OF THE SYSTEMS, PROGRAMS AND/OR PROCEDURES SHALL PROVIDE FOR ADEQUATE TRENCH EXCAVATIONS SAFETY PROTECTION THAT COMPLIES WITH AS A MINIMUM, OSHA STANDARDS FOR TRENCH EXCAVATIONS. SPECIFICALLY, CONTRACTOR AND/OR CONTRACTOR'S INDEPENDENTLY RETAINED EMPLOYEE OR SAFETY CONSULTANT SHALL IMPLEMENT A TRENCH SAFETY PROGRAM IN ACCORDANCE WITH OSHA STANDARDS GOVERNING THE PRESENCE AND ACTIVITIES OF INDIVIDUALS WORKING IN AND AROUND TRENCH EXCAVATION.

NOTES:

- PROPERTY LINES SHOWN ARE APPROXIMATE.
- CONTRACTOR SHALL SAW-CUT ALL PAVEMENT TO BE REMOVED.

CONTRACTOR SHALL BE RESPONSIBLE FOR LOCATING ALL UTILITIES WHETHER PUBLIC OR PRIVATE, PRIOR TO CONSTRUCTION



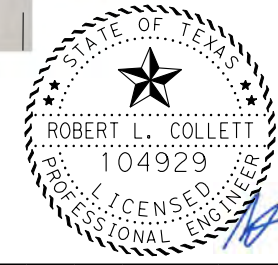
ESTIMATED QUANTITIES			
ITEM NO.	DESCRIPTION	UNIT	QTY
103.3	REMOVE CONCRETE SIDEWALKS & DRIVEWAYS (COSA)	SF	96
203	TACK COAT (COSA)	GAL	18
205.2	HOT MIX ASPHALTIC PAVEMENT - TYPE B (10" COMPACTED DEPTH) (COSA)	SY	172
205.4	HOT MIX ASPHALTIC PAVEMENT - TYPE D (2" COMPACTED DEPTH) (COSA)	SY	172
208	SALVAGING HAULING & STOCKPILING RECLAIMABLE ASPHALTIC PAVEMENT (COSA)	SY	172
503.1	PORTLAND CEMENT CONCRETE DRIVEWAYS (COSA)	SY	11
530.1	BARRICADES, SIGNS & TRAFFIC HANDLING (PROJECT LOCATION 11) (COSA)	LS	1
550	TRENCH EXCAVATION SAFETY PROTECTION	LF	194
848	8" PVC GRAVITY SANITARY SEWER PIPE (SDR-26-3034, 115 PSI)	LF	194
851	ADJUST EXISTING MANHOLE (NEW WATER TIGHT RING AND COVER)	EA	2
852	SANITARY SEWER MANHOLE (STANDARD 0-6 FEET)	EA	1
852	SANITARY SEWER MANHOLE (ADDITIONAL VERTICAL FOOT)	VF	2
862	ABANDONMENT OF SS MAIN (PIPE)	LF	195
854	TWO-WAY SANITARY SEWER CLEAN-OUT	EA	4
854	SANITARY SEWER LATERALS (SDR 26-2241, 160 PSI)	LF	106
862	ABANDONMENT OF SS MAIN (MANHOLE)	EA	1
865	BYPASS PUMPING (SMALL DIAMETER SS) (PROJECT LOCATION 11)	LS	1
866	SEWER MAIN PRE-TELEVISION INSPECTION (8" THROUGH 15" DIAMETER)	LF	194
866	SEWER MAIN POST-TELEVISION INSPECTION (8" THROUGH 15" DIAMETER)	LF	194
910	MANHOLE REHABILITATION	VF	13

LEGEND

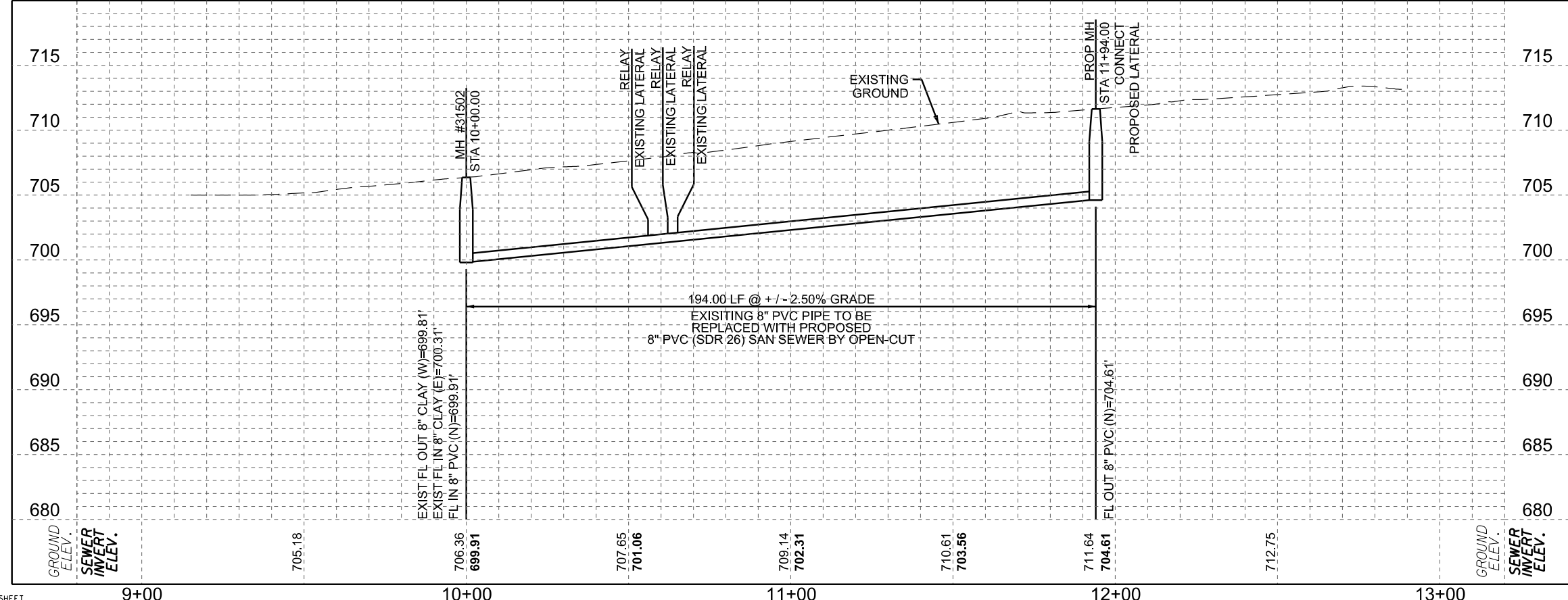
- EXISTING NATURAL GAS LINE --- Ex Gas ---
- EXISTING OVERHEAD ELECTRIC --- Ex OHE ---
- EXISTING UNDERGROUND ELECTRIC --- Ex UGE ---
- EXISTING UNDERGROUND TELEPHONE --- Ex UG Tel ---
- EXISTING WATER LINE --- Ex W ---
- EXISTING SANITARY SEWER LINE --- Ex SS ---
- EXISTING STORM SEWER LINE ---
- EXISTING SANITARY SEWER MH ---
- EXISTING POWER POLE ---
- PROPOSED SANITARY SEWER MH ---
- PROPOSED SANITARY SEWER LINE ---
- ABANDON SANITARY SEWER LINE ---
- PROPOSED SANITARY SEWER LATERAL ---
- PROPOSED SANITARY SEWER 2-WAY C/O ---
- PROPOSED CONCRETE ENCASMENT ---
- PROPOSED PAVEMENT REPAIR ---

OPEN-CUT NOTES:

- CALL THE TEXAS STATE WIDE ONE CALL LOCATOR NUMBER 1-800-344-8344, 48 HOURS BEFORE BEGINNING ANY EXCAVATION.
- LOCATIONS OF EXISTING UTILITIES SHOWN ARE APPROXIMATE AND BASED ON AVAILABLE DRAWINGS AND FIELD SURVEY. CONTRACTOR SHALL VERIFY LOCATION OF ALL EXISTING UTILITIES PRIOR TO CONSTRUCTION.
- THE CONTRACTOR SHALL BE RESPONSIBLE FOR MAINTAINING OPERATION OF ALL EXISTING UTILITIES AFFECTED BY PROPOSED CONSTRUCTION.
- POINT REPAIRS ARE FOR PARTIAL COLLAPSE, MISSING PIPE, AND/OR PROTRUDING SERVICE IN MAIN, UNLESS OTHERWISE NOTED.
- SMART MANHOLE COVERS: THE CONTRACTOR SHALL NOTIFY AMERICA ESPINOZA AT 210-233-2934 OR JOE MARTINEZ AT 210-233-2071 A MINIMUM OF 1 WEEK, NOT COUNTING WEEKENDS OR SAWS HOLIDAYS, BEFORE WORKING ON THE MANHOLE, IN ORDER TO HAVE SAWS REMOVE THE SMART COVER. ANY DAMAGE DONE TO SMART COVER WILL BE AT CONTRACTOR'S EXPENSE.**
- CONTRACTOR TO COORDINATE WITH SCHOOLS AND TO SCHEDULE WORK EFFORTS AROUND SCHOOL'S PEAK HOURS. CONTRACTOR SHALL EXPOSE AND PROTECT ALL UTILITIES WITHIN THE SEWER CONSTRUCTION ENVELOPE.
- CONTRACTOR SHALL EXPOSE AND PROTECT ALL UTILITIES WITHIN THE SEWER CONSTRUCTION ENVELOPE.



11/4/20



HALFF CAMACHO-HERNANDEZ & ASSOCIATES, LLC
 100 NE LOOP 410, SUITE 200 SAN ANTONIO, TEXAS 78216
 415 EMBASSY OAKS - SUITE 205 SAN ANTONIO, TX. 78216
 TEL: (210) 798-1895 OFFICE: (210) 341-6200 FAX: (210) 341-6300
 TBPE FIRM REGISTRATION #312 FIRM NUMBER: F-8478

1	ADD CONCRETE ITEMS	PA	RC	11/4/20
No.	Revision	Drawn	Approved	Date

REVISIONS

HALFF CENTRAL SEWERSHED PACKAGE 8 - OPEN CUT
 OPENCUT PROJECT LOCATION 11 N PINE ST

DEVELOPER:		BUDGET PROJ.	
SUBMITTED		APPROVED	
MAP No.	168584	SHEET	33
SECT. No.		DR. MY	CK. ES
JOB No. 19-4538		OF 75	

PDF-TX001-BLK_254.plt

K:\SANS Central Sewershed Pack 8\SEWER-C-20-C-8CSP8_CHA - SHT C-20_PP01.dgn

10/9/20 11:32:30 AM PNP SHEET

TRENCH SAFETY PROTECTION

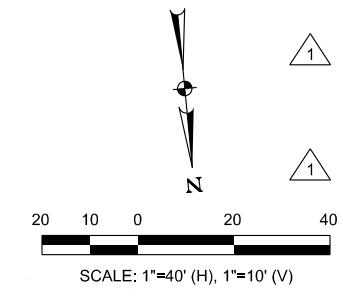
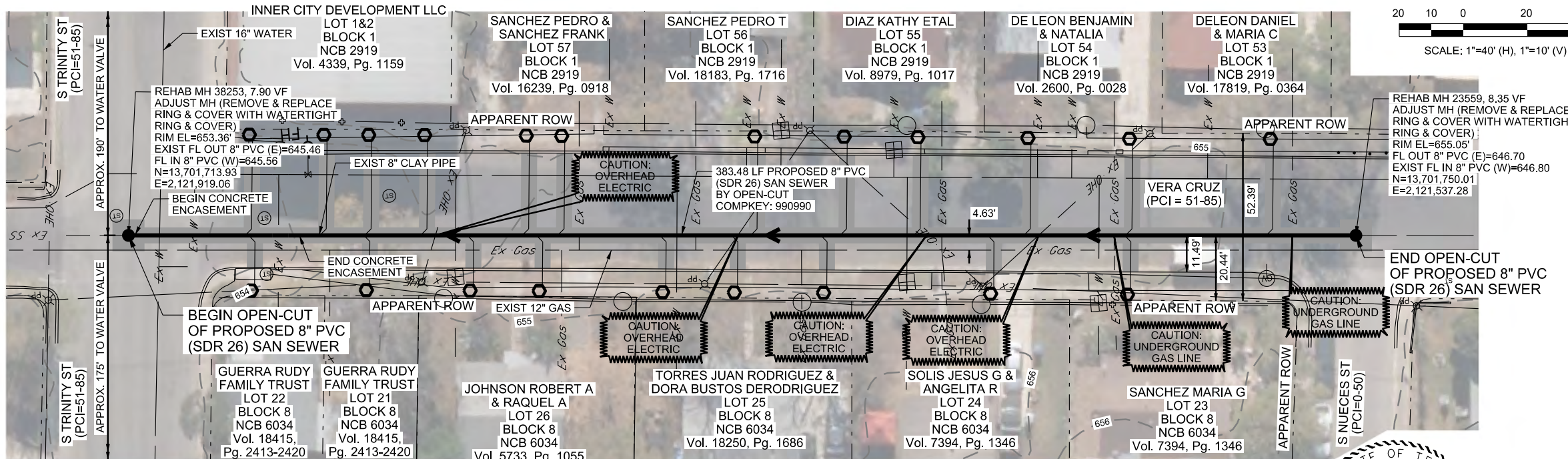
CONTRACTOR AND/OR CONTRACTOR'S INDEPENDENTLY RETAINED EMPLOYEE OR STRUCTURAL DESIGN/GEOTECHNICAL/SAFETY/EQUIPMENT CONSULTANT, IF ANY, SHALL REVIEW THESE PLANS AND AVAILABLE GEOTECHNICAL INFORMATION AND ANTICIPATED INSTALLATION SITE(S) WITHIN THE PROJECT WORK AREA IN ORDER TO IMPLEMENT CONTRACTOR'S TRENCH EXCAVATION SAFETY PROTECTION SYSTEMS, PROGRAMS AND/OR PROCEDURES. THE CONTRACTOR'S IMPLEMENTATION OF THE SYSTEMS, PROGRAMS AND/OR PROCEDURES SHALL PROVIDE FOR ADEQUATE TRENCH EXCAVATIONS SAFETY PROTECTION THAT COMPLIES WITH AS A MINIMUM, OSHA STANDARDS FOR TRENCH EXCAVATIONS. SPECIFICALLY, CONTRACTOR AND/OR CONTRACTOR'S INDEPENDENTLY RETAINED EMPLOYEE OR SAFETY CONSULTANT SHALL IMPLEMENT A TRENCH SAFETY PROGRAM IN ACCORDANCE WITH OSHA STANDARDS GOVERNING THE PRESENCE AND ACTIVITIES OF INDIVIDUALS WORKING IN AND AROUND TRENCH EXCAVATION.

NOTES:

- PROPERTY LINES SHOWN ARE APPROXIMATE.
- CONTRACTOR SHALL SAW-CUT ALL PAVEMENT TO BE REMOVED.

CONTRACTOR SHALL BE RESPONSIBLE FOR LOCATING ALL UTILITIES WHETHER PUBLIC OR PRIVATE, PRIOR TO CONSTRUCTION

ESTIMATED QUANTITIES			
ITEM NO.	DESCRIPTION	UNIT	QTY
103.3	REMOVE CONCRETE SIDEWALKS & DRIVEWAYS (COSA)	SF	215
203	TACK COAT (COSA)	GAL	43
205.2	HOT MIX ASPHALTIC PAVEMENT - TYPE B (10" COMPACTED DEPTH) (COSA)	SY	422
205.4	HOT MIX ASPHALTIC PAVEMENT - TYPE D (2" COMPACTED DEPTH) (COSA)	SY	422
208	SALVAGING, HAULING & STOCKPILING RECLAIMABLE ASPHALTIC PAVEMENT (COSA)	SY	422
503.1	PORTLAND CEMENT CONCRETE DRIVEWAYS (COSA)	SY	24
530.1	BARRICADES, SIGNS & TRAFFIC HANDLING (PROJECT LOCATION 13) (COSA)	LS	1
550	TRENCH EXCAVATION SAFETY PROTECTION	LF	384
848	8" PVC GRAVITY SANITARY SEWER PIPE (SDR-26-3034, 115 PSI)	LF	384
851	ADJUST EXISTING MANHOLE (NEW WATER TIGHT RING AND COVER)	EA	2
854	TWO-WAY SANITARY SEWER CLEAN-OUT	EA	21
854	SANITARY SEWER LATERALS (SDR 26-2241, 160 PSI)	LF	567
858	CONCRETE ENCASEMENT, CRADLES, SADDLES AND COLLARS	CY	5
865	BYPASS PUMPING (SMALL DIAMETER SS) (PROJECT LOCATION 13)	LS	1
866	SEWER MAIN PRE-TELEVISION INSPECTION (8" THROUGH 15" DIAMETER)	LF	384
866	SEWER MAIN POST-TELEVISION INSPECTION (8" THROUGH 15" DIAMETER)	LF	384
910	MANHOLE REHABILITATION	VF	17

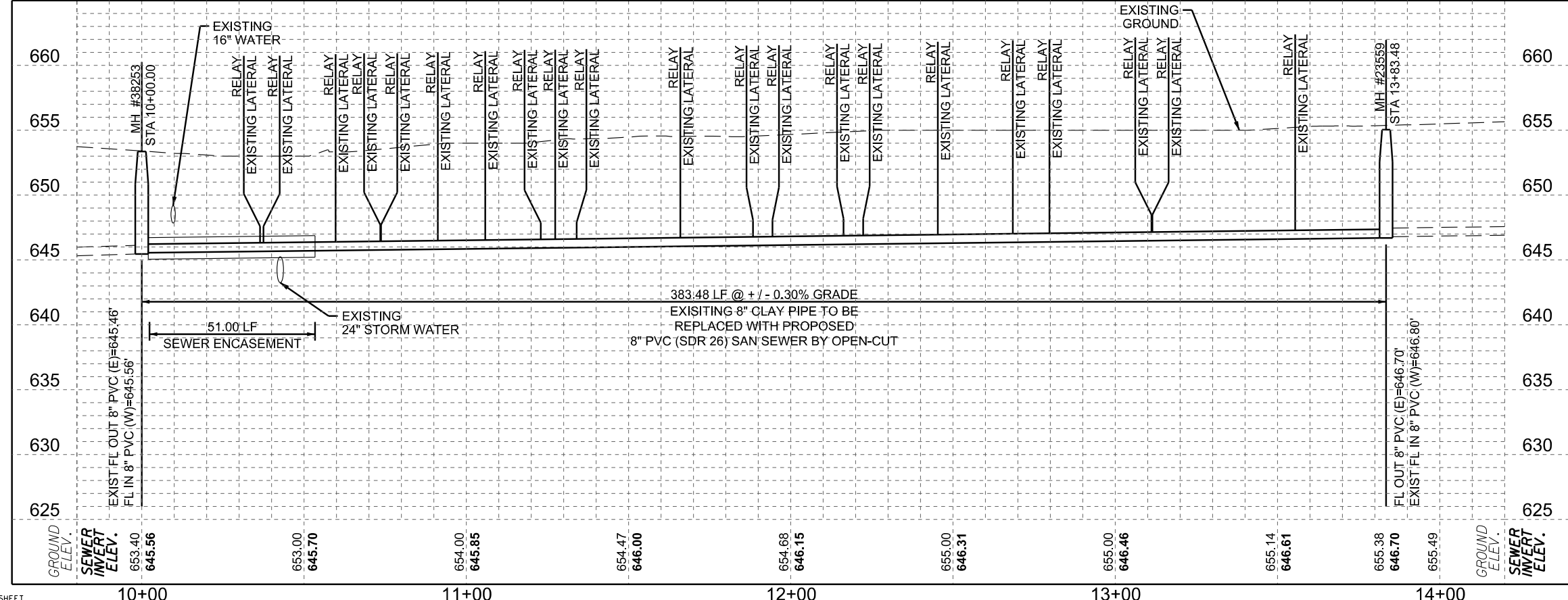


LEGEND

- EXISTING NATURAL GAS LINE
- EXISTING OVERHEAD ELECTRIC
- EXISTING UNDERGROUND ELECTRIC
- EXISTING UNDERGROUND TELEPHONE
- EXISTING WATER LINE
- EXISTING SANITARY SEWER LINE
- EXISTING STORM SEWER LINE
- EXISTING SANITARY SEWER MH
- EXISTING POWER POLE
- PROPOSED SANITARY SEWER MH
- PROPOSED SANITARY SEWER LINE
- ABANDON SANITARY SEWER LINE
- PROPOSED SANITARY SEWER LATERAL
- PROPOSED SANITARY SEWER 2-WAY C/O
- PROPOSED CONCRETE ENCASEMENT
- PROPOSED PAVEMENT REPAIR

OPEN-CUT NOTES:

- CALL THE TEXAS STATE WIDE ONE CALL LOCATOR NUMBER 1-800-344-8344, 48 HOURS BEFORE BEGINNING ANY EXCAVATION. LOCATIONS OF EXISTING UTILITIES SHOWN ARE APPROXIMATE AND BASED ON AVAILABLE DRAWINGS AND FIELD SURVEY. CONTRACTOR SHALL VERIFY LOCATION OF ALL EXISTING UTILITIES PRIOR TO CONSTRUCTION.
- THE CONTRACTOR SHALL BE RESPONSIBLE FOR MAINTAINING OPERATION OF ALL EXISTING UTILITIES AFFECTED BY PROPOSED CONSTRUCTION.
- POINT REPAIRS ARE FOR PARTIAL COLLAPSE, MISSING PIPE, AND/OR PROTRUDING SERVICE IN MAIN, UNLESS OTHERWISE NOTED.
- SMART MANHOLE COVERS: THE CONTRACTOR SHALL NOTIFY AMERICA ESPINOZA AT 210-233-2934 OR JOE MARTINEZ AT 210-233-2071 A MINIMUM OF 1 WEEK, NOT COUNTING WEEKENDS OR SAWS HOLIDAYS, BEFORE WORKING ON THE MANHOLE, IN ORDER TO HAVE SAWS REMOVE THE SMART COVER. ANY DAMAGE DONE TO SMART COVER WILL BE AT CONTRACTOR'S EXPENSE.**
- CONTRACTOR TO COORDINATE WITH SCHOOLS AND TO SCHEDULE WORK EFFORTS AROUND SCHOOL'S PEAK HOURS. CONTRACTOR SHALL EXPOSE AND PROTECT ALL UTILITIES WITHIN THE SEWER CONSTRUCTION ENVELOPE.



HALFF CAMACHO-HERNANDEZ & ASSOCIATES, LLC
 100 NE LOOP 410, SUITE 200 SAN ANTONIO, TEXAS 78216
 415 EMBASSY OAKS - SUITE 205 SAN ANTONIO, TX. 78216
 TEL (210) 798-1895 OFFICE: (210) 341-6200 FAX: (210) 341-6300
 TBPE FIRM REGISTRATION #312 FIRM NUMBER: F-8478

1	ADD CONCRETE ITEMS	PA	RC	11/4/20
No.	Revision	Drawn	Approved	Date

REVISIONS

CENTRAL SEWERSHED PACKAGE 8 - OPEN CUT

OPENCUT PROJECT LOCATION 13 VERA CRUZ

DEVELOPER:		BUDGET PROJ.	
SUBMITTED		APPROVED	
MAP No.	152574	SHEET	39
SECT. No.		DR. MY	CK. ES
JOB No.	19-4538	Of 75	